



Shongum Sportsmen's Association

# Steel Orientation

Shongum Sportsmen's Association



# Agenda

- Introductions
- Safety - Everyone's Responsibility
- Classroom Lecture and Discussion
  - Good and Bad Examples of Steel
  - Pistol Pit Rules
  - 100yd Rules
  - Questions and Feedback
- Practical Exercise (Pistol Pit)
- Sign-off and Closure



# Steel Orientation

- Why Separate Orientation?
  - Safety Is Paramount
  - Club Belongs To 900+ Members
    - One Infraction May Impact Many
    - Challenge Anyone
- History
  - Concerns \* Ban \* Steel Range Rules
  - Home Grown And Non Standard Targets
- Minimize Ricochet Potential
- Keep Rules Simple
- Easy To Enforce



# Steel Orientation

- Proper PPE
  - Safety Glasses Vs Standard



WRAP AROUND



USE SIDE SHIELDS



Best Practice is to wear a cap to block splatter





# Steel Splatter







# Steel Orientation

- Steel Option / Alternative
  - Neubold - [WWW.THROOMTARGETS.COM](http://WWW.THROOMTARGETS.COM)
  - Limited Ricochet
  - Lighter To Carry/Transport





# Steel Orientation

- Throom Targets
  - Some High Velocity Ammo May Pass Through Without Activating
- Knock Down Steel/Throom
  - Requires Line Clear To Reset
- Two Hole Gong With Sheperd's Hook



Fill hole with Bolt





# Steel Orientation

- Frangible Ammunition
  - Copper Or Copper Powder And Binding Agent
  - Expensive
  - Typical Use Training







# Steel Orientation

- ADMINISTRATION
  - Sign In Sheets Required - Dated
    - Print Name, Membership No, Signature
  - Issue Cards
    - Template file on PC
    - Business Card Blanks
    - Laser Printer, Inkjet not waterproof
  - Turn in Sign in sheets to Membership Officer



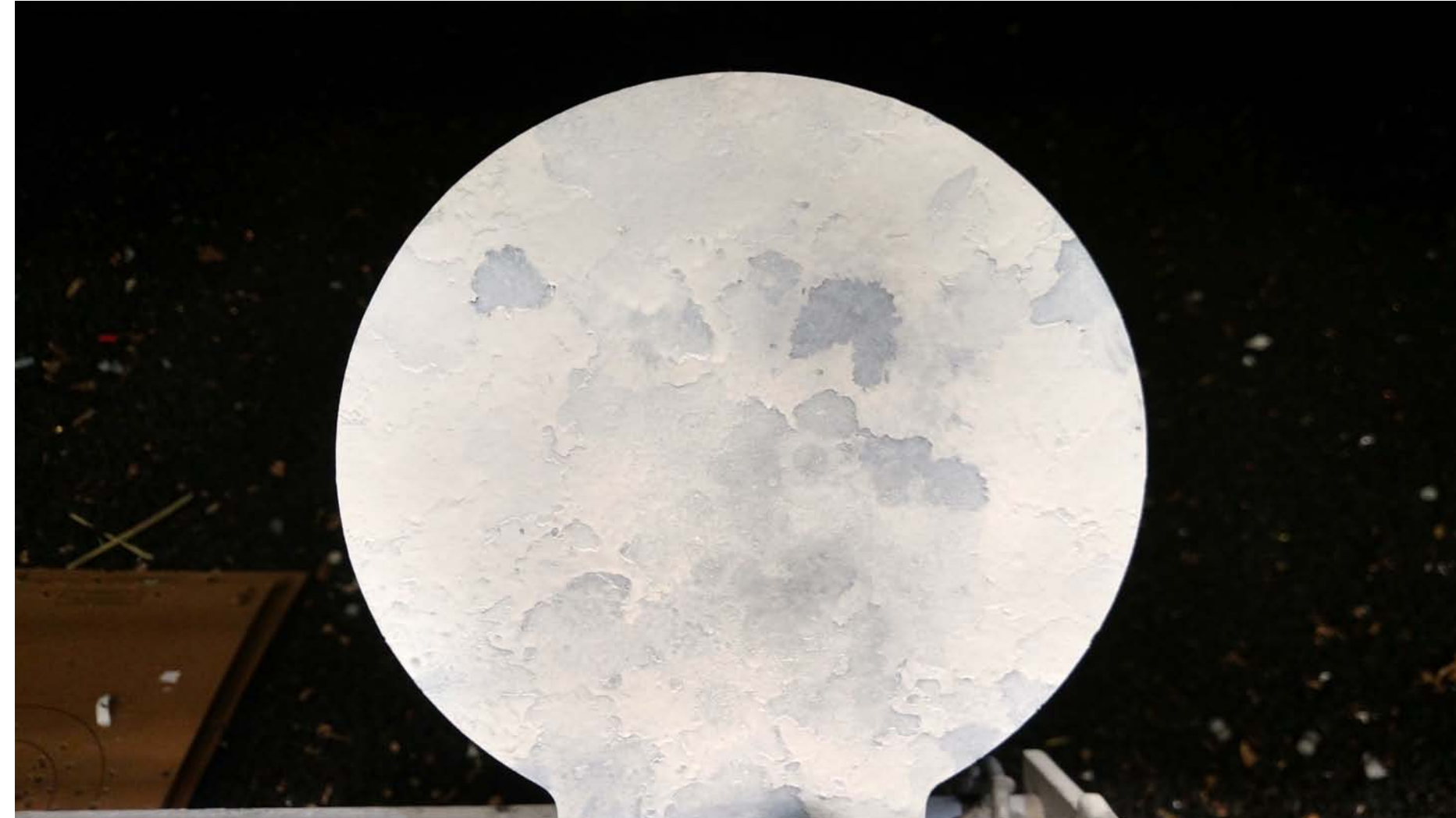


# Steel Basics

- Steel Shooting - Range Rule Appendix D
  - Separate Training/Endorsement
  - May be Revoked for Noncompliance
- Steel - AR500 or AR550 3/8" MIN THICKNESS
  - Water Jet, Laser Jet or Plasma Cut
- Damaged Steel Prohibited
  - Pitted, cracked, warped or dimpled
- Shongum RSO's can declare steel unsafe AND removed from use on our range.
- Courtesy: If splatter affects adjacent paper targets, you have one hour from range sign in time to stop.



# Good Steel

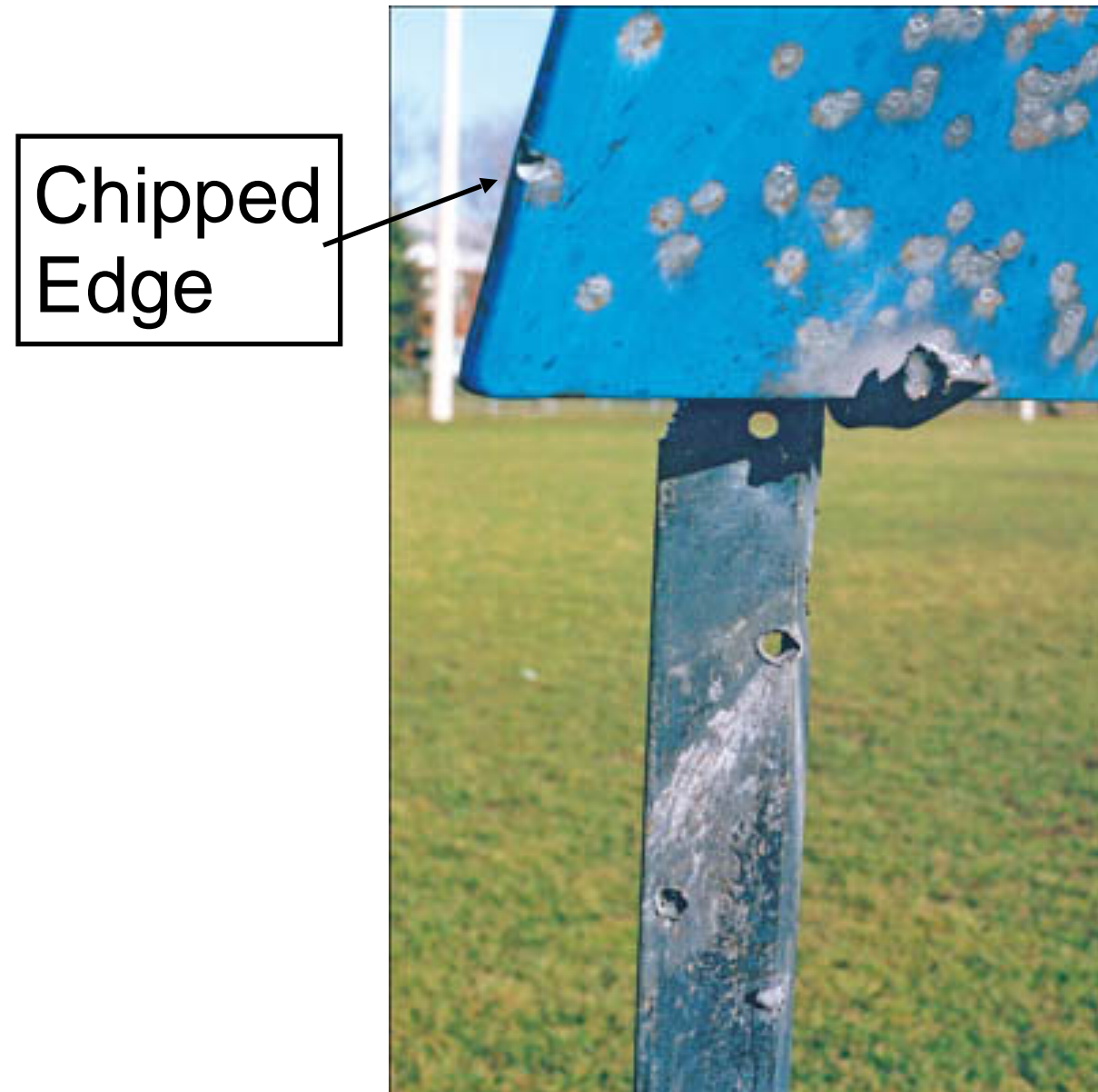


Discoloration Due to Paint  
Chipping/Repainting  
Steel Surface is Smooth





# Damaged Steel - NOT ALLOWED



Damaged Steel and Stand

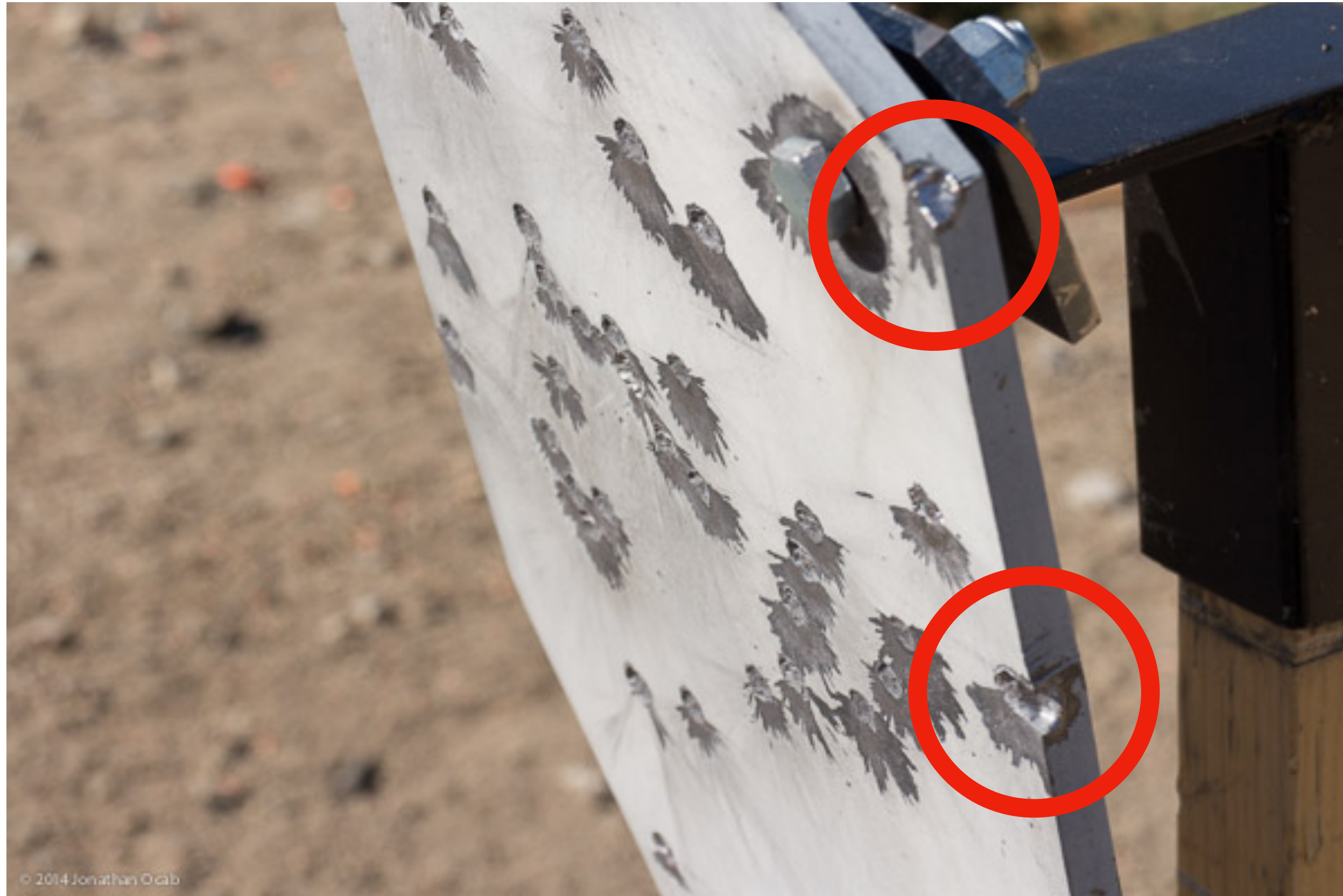


Mild Steel  
(Not AR500)  
Cratered by  
308 at 100  
Yards





# Damaged Steel - NOT ALLOWED

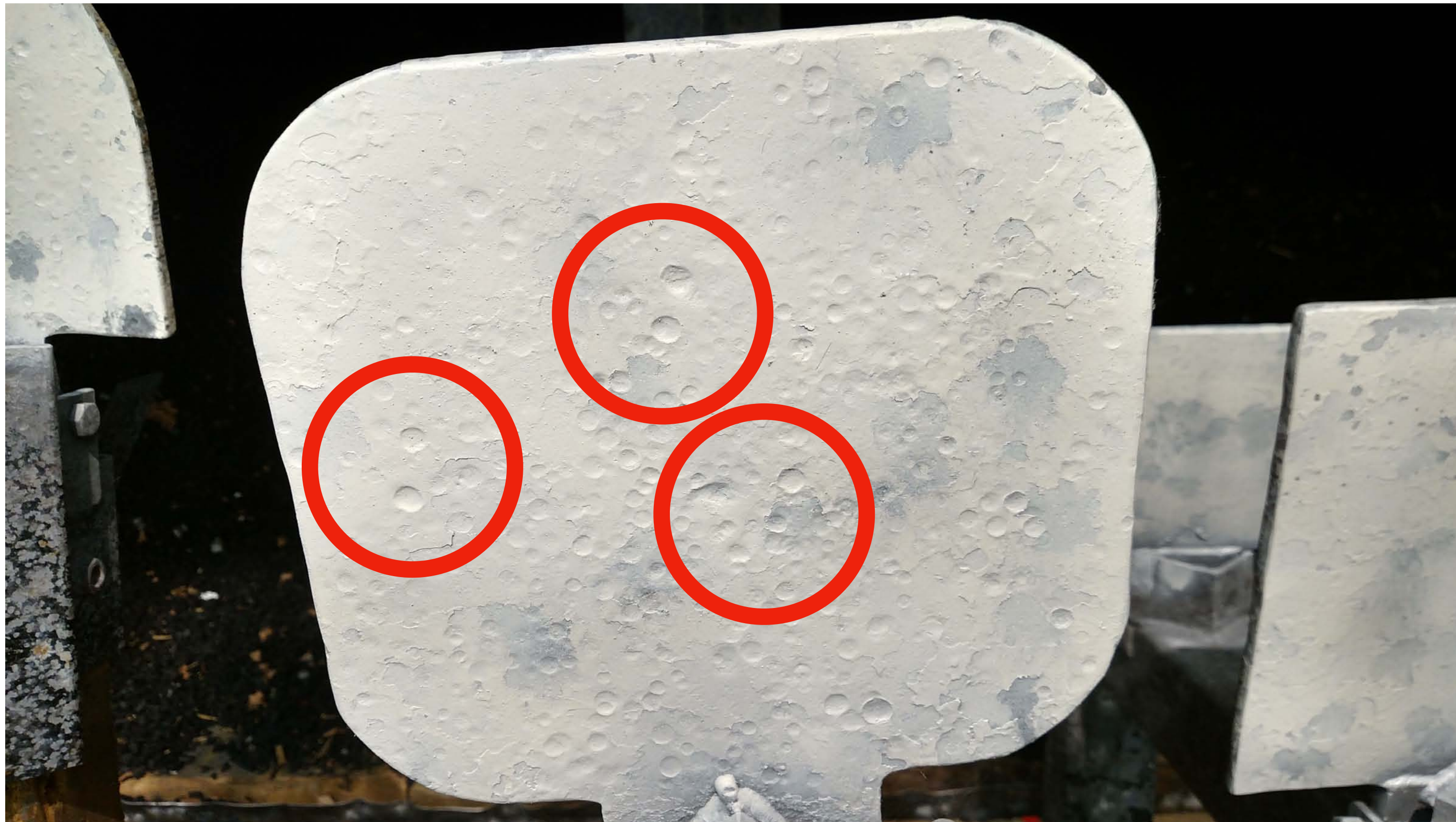


Chipped Edge and Pitting. Damage increases possible fragmentation/back splatter





# Damaged Steel - NOT ALLOWED



Dimples are depressed areas. Craters are deeper with a formed edge.





Shongum Sportsmen's Association

# Damaged Steel - NOT ALLOWED



Significant Dimpling -  
Some Cratering





# Damaged Steel - NOT ALLOWED



Warped, Dimpled and Cratered Popper







# Pistol Pit Rules

- Steel Challenge Type
- Steel shall be supported
  - NOT PLACED ON GROUND
  - No Poppers, No Knock Over Plates
- Stand/Cap on 2x4 post, Wood Sawhorse, or Shepherd's Hook
  - Use Nonmetallic Straps
  - Chain Supports not allowed
- Stand shall allow steel to swing on impact, or with a fixed downward angle, about 15 degrees



# Steel Support Examples



MGM

NEVCO







# Steel Examples



Ground Mount Popper –SHOTGUN ONLY  
In Pistol Pit



\* Paddles ship unpainted

Dueling Tree Type  
**Not Allowed**





# Steel Examples



SHEPHERD'S HOOK – SUPPORTING ONE HOLE PLATES





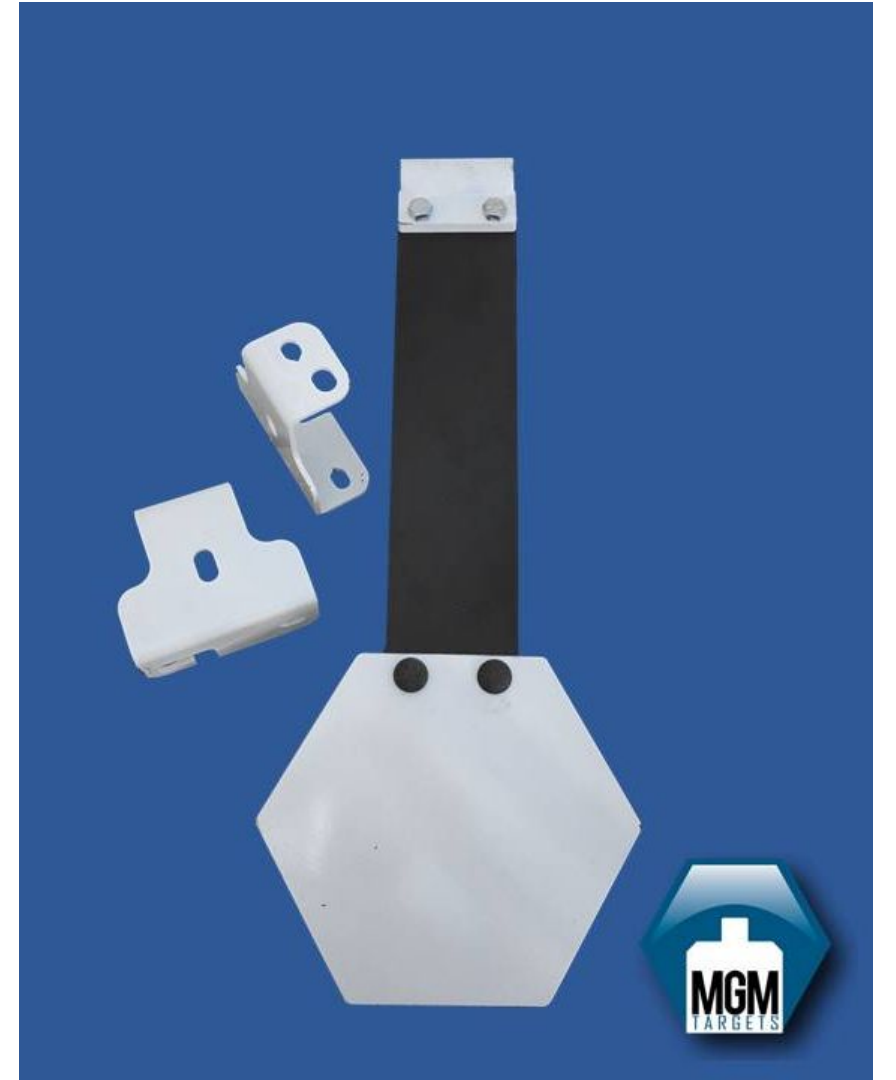
# Support Examples



Straps supported from Steel **Not Allowed**



Straps supported from wood Post/ Sawhorse Allowed





# NOT ALLOWED







# Pistol Pit Rules

- TARGET PLACEMENT
  - Maximum Height 5' to Top of Steel
  - Placed within 2' of the Impact Area
  - Far Left of Pistol area as possible
  - No further Right than line formed by back of trap houses





# Pistol Pit Rules



Steel Placement Location





# Pistol Pit Rules



Steel Placement Location - Trap House  
4 is the limit





# Pistol Pit Rules

- Pistol and Pistol Caliber Carbine
- Minimum Distance – 30'
- Maximum Distance – 50'
- Engage Steel directly in front
  - No more than 5' either left or right
- **Pistol Caliber or Pistol Caliber Carbines Only**
- Rifle Calibers Prohibited
- BB's and Air Pellets Prohibited





# Pistol Pit Rules

## Shotgun Rules

- All Requirements for Pistol/Carbine Apply
  - Steel Grade
  - Placement
  - Distances/Engagement
- Ground Mounted Poppers Allowed
- Use #7 ½ to #9 LEAD shot only
- Any other shot or slugs Prohibited





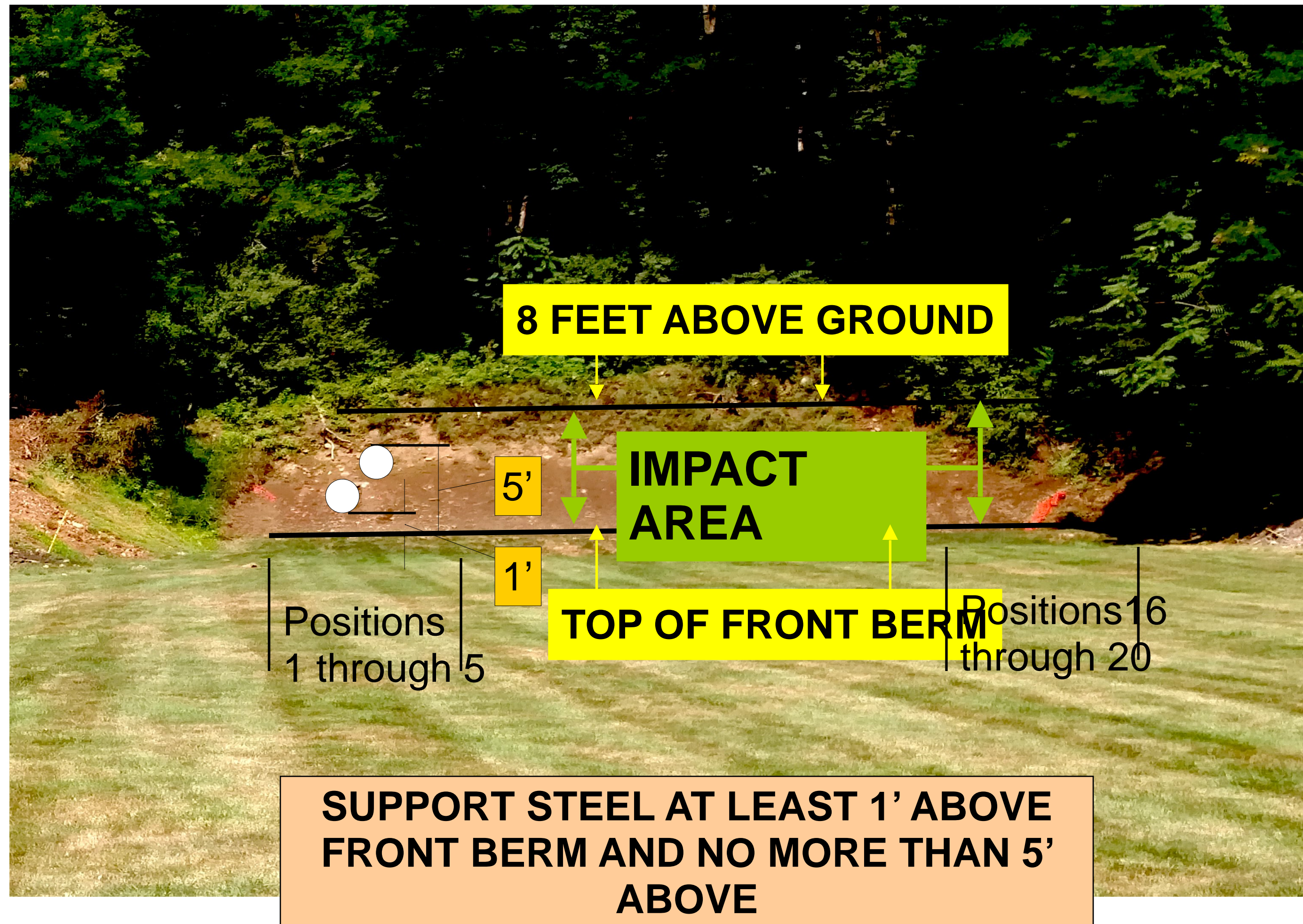
# 100 yard Rules

- Steel shall be placed at 100 yards only.
- Use positions 1 – 5 or 16 -20
- Place steel in pit behind front berm
- Max width 24” for sawhorse or supported steel
- Bottom of steel is 1’ above front berm and top is not more than 5’ above front berm
- No more than 4 steel targets allowed





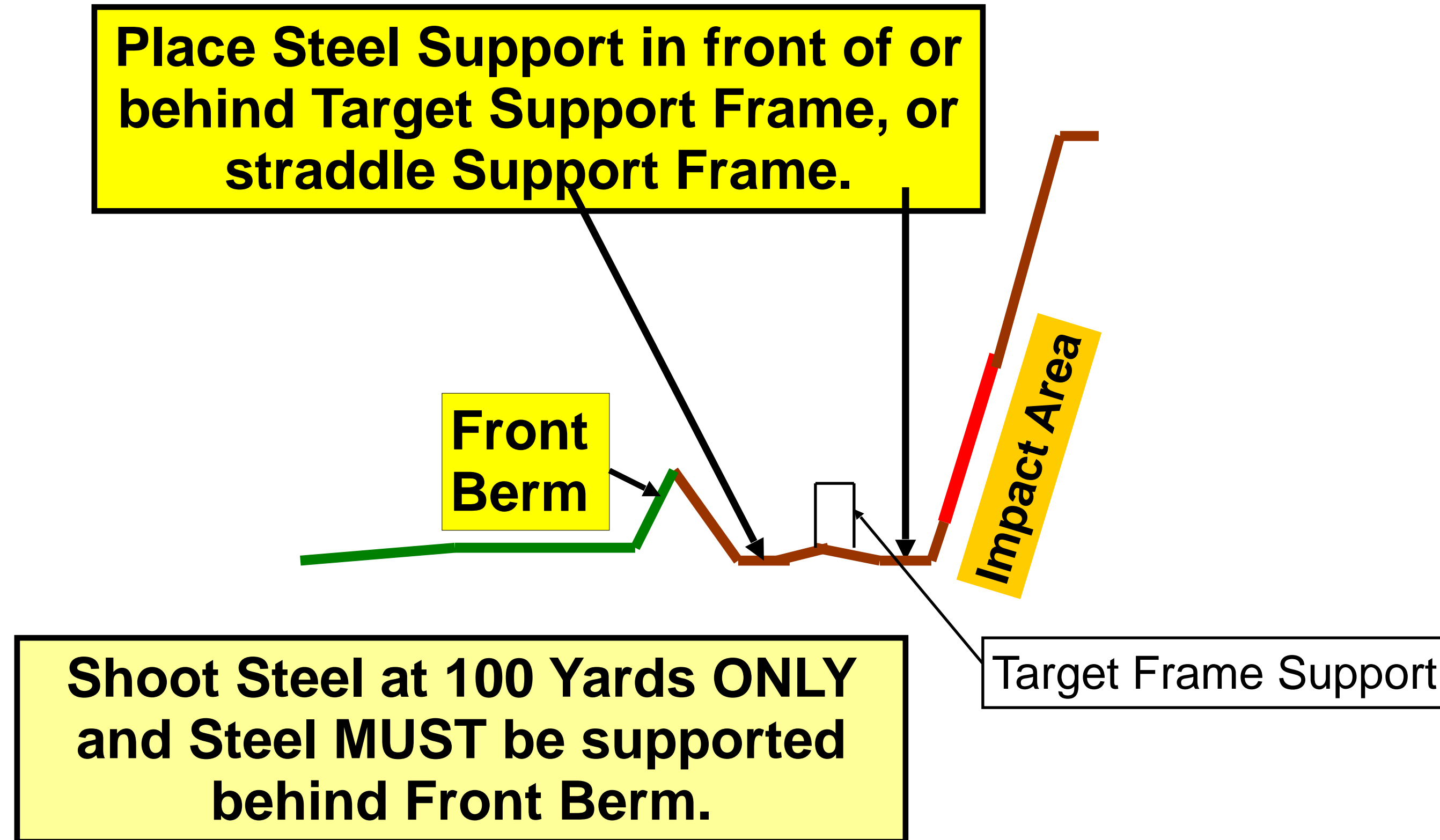
# 100 yard Rules







# 100 yard Rules



100 YARD RIFLE RANGE STEEL LOCATION BEHIND FRONT BERM





# 100 yard Rules

- View from Position 1
- Room between support frame and front berm
- Room around support frame







# 100 yard Rules

- Stand/Sawhorse shall allow steel to swing on impact, or with a fixed downward angle, about 15 degrees – direct splatter to back of front berm
- Steel Support – Manufactured Stand, Cap, 2” x 4” Wood Post
- Shepherd’s Hook not allowed
- Stand assembly/verticals not steel or chain
- Wood saw horse types allowed
- Use Nonmetallic Straps to support steel
- Engage steel from directly in front, not an angle

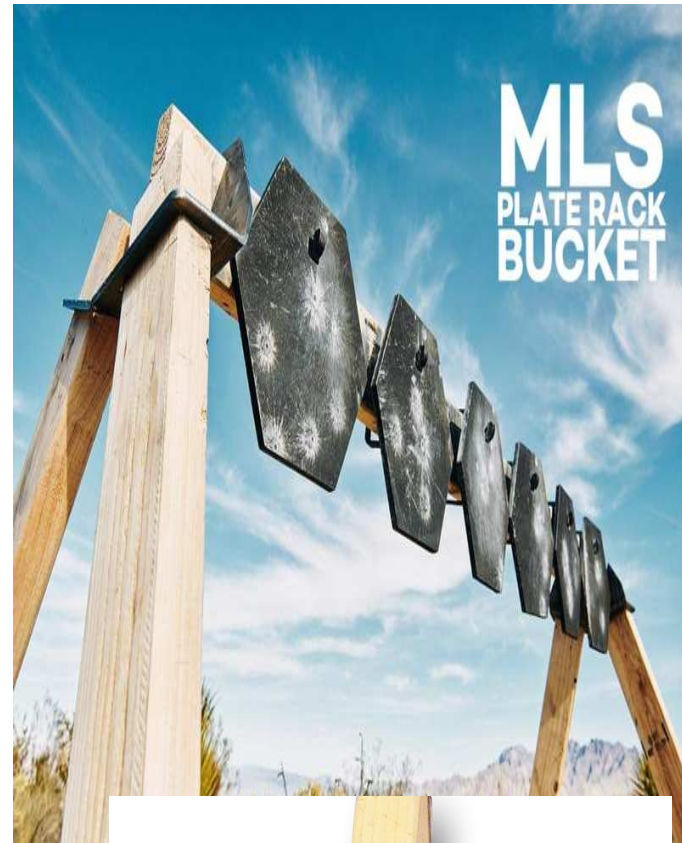




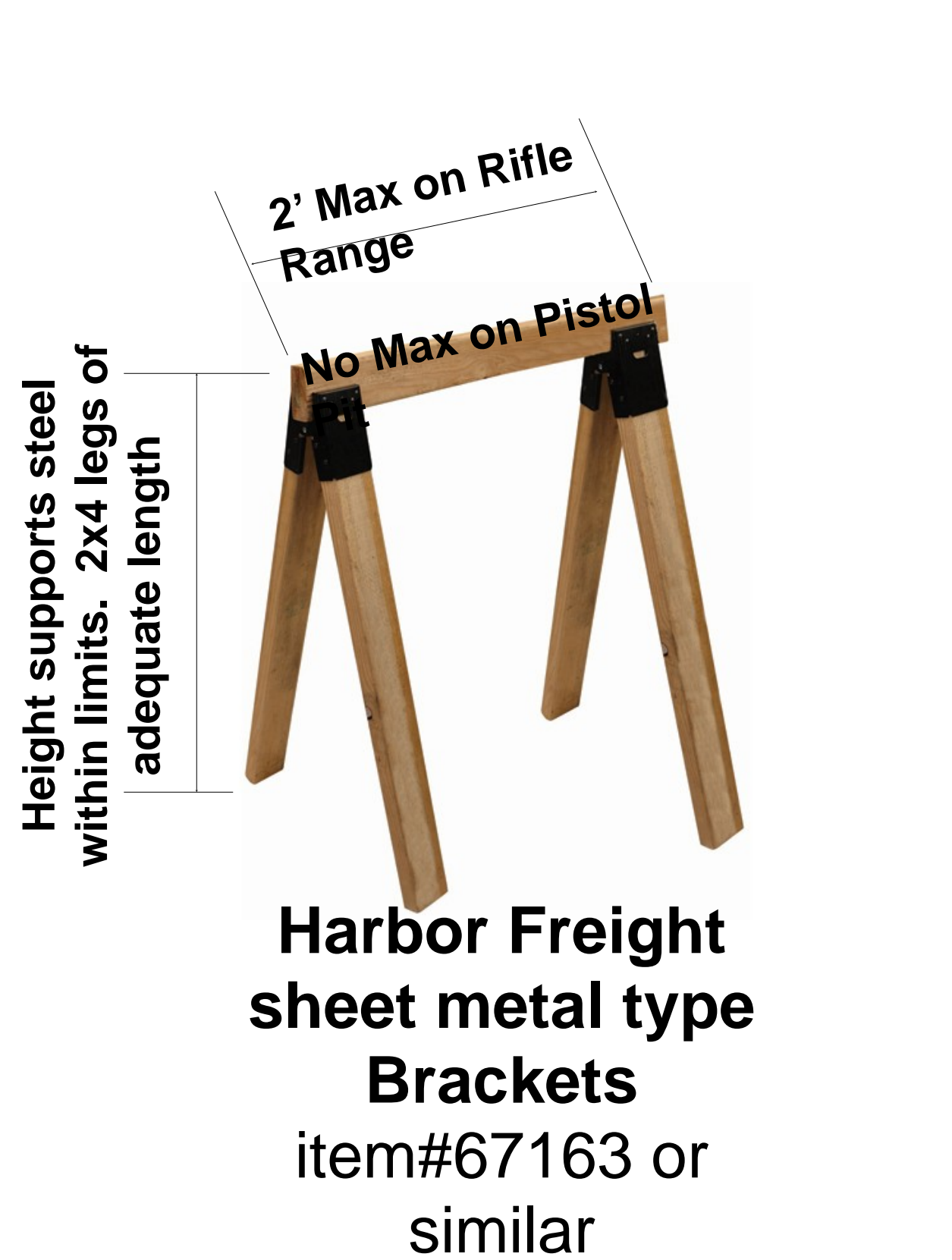
# 100 yard Rules

## Sawhorse Type Supports

Mount steel to 2x4 support or hang with strap  
All Wood Construction Only - Some Suggested Alternates



**Manufactured system from MGM Targets**



**Harbor Freight sheet metal type Brackets**  
item#67163 or similar



**Brackets from Shooting Targets7.com F24 Model**





# 100 yard Rules

- Shotguns – 12 Gage maximum slugs allowed
- Prohibited Ammunition:
  - Steel Core
  - Green Tip (SS109)
  - M-855 & XM-855
  - Penetrating rounds
  - Russian Silver Tips
  - Wolf Steel Jacketed
  - Any bullets containing steel





# Steel Endorsement Card

- Member fills in Name, Membership Number and Signs back
- Orientation RO fills in Date, Prints and Signs name.
- Attendance sheet provided to CRSO

SHONGUM SPORTSMEN'S ASSOCIATION  
STEEL SHOOTING ORIENTATION

MEMBER NAME (print) NUMBER

Attended an orientation on DATE

Shongum Range Officer

Shongum Range Officer (print) 04/19

MEMBER SIGNATURE

REMEMBER PROPER USAGE IS KEY TO SAFETY.

SAFETY FIRST AND ALWAYS 04/19





# Steel Resources

- “Everything you need to know about AR500 targets”  
[www.shootingtargets7.com](http://www.shootingtargets7.com)  
[Link to the PDF - Comprehensive Material](#)
- Shooting Targets video on steel use
  - <https://youtu.be/WwUXLENIsyU>
- Steel is damaged if round velocity is greater than 2,850 fps at 100 yards.
  - <https://shootingtargets7.com/selection>
- Recommend 1/2” thick steel for rifle magnum loads

**Material contained within does not supersede rules within this document**





# Document History

Revision Date	Description
18-Sep-2020	<ul style="list-style-type: none"><li>• Added Slide 28 for Pew Pew Plates, club member who sells AR500 club compliant</li><li>• Added Slide 30, summary of revision</li></ul>
10-Feb-2023	<ul style="list-style-type: none"><li>• Removed Pew Pew</li><li>• Reformatted</li><li>• Updated Links</li></ul>





# Steel Orientation

- Questions
- Feedback





# Shongum Sportsmen's Association